



IBME

Empowering Wealth, Elevating Community.

Whitepaper V1.0



Abstract

The IBME Token (\$IBME) is an SPL (Solana Program Library) cryptocurrency developed to fuel the IBCAME ME Platform. It serves as the primary medium of exchange within a comprehensive digital ecosystem, including a multi-vendor marketplace, wholesalers' e-commerce stores, and a delivery application. Designed to foster economic empowerment, particularly for Black Americans, IBME Token provides a seamless, secure, and low-cost transaction method. By leveraging blockchain technology, the IBME ecosystem ensures financial independence, reduces transaction fees, enhances security, and promotes shared ownership and governance.



Introduction

The IBME Token (\$IBME) is the native digital currency of the IBCAME ME Platform, a decentralized financial ecosystem dedicated to supporting Black-owned businesses and fostering economic reinvestment within the Black American community. Built on the Solana blockchain, IBME is designed to facilitate fast, secure, and low-cost transactions, creating a self-sustaining digital economy that promotes financial independence while reducing dependence on traditional banking systems and external financial institutions. The IBCAME ME ecosystem integrates various commerce and financial services, including:

- A multi-vendor marketplace that connects buyers with Black-owned businesses, enabling direct peer-to-peer transactions.
- Wholesalers' e-commerce stores to provide Black-owned businesses access to bulk purchasing at competitive rates.
- A multi-vendor ordering and delivery application, ensuring seamless logistics and product distribution across communities.

By utilizing IBME Tokens as the primary medium of exchange, users can transact instantly, vendors can retain more profits, and businesses can expand their reach without the high costs associated with traditional payment gateways. The platform also introduces an ownership and governance model, allowing IBME holders to participate in decision-making and trade tokens for equity shares, fostering economic empowerment through decentralized ownership.





Key Features



Seamless Transactions

The IBCAME ME ecosystem is designed for efficiency and convenience, ensuring that all transactions conducted with IBME Tokens are:

- Instant – Transactions are confirmed within seconds, eliminating delays associated with traditional banking systems.
- Low-Cost – By leveraging the high-speed and low-fee Solana blockchain, users avoid expensive transaction fees associated with credit cards and bank transfers.
- Interoperable – IBME can be used across all IBCAME ME services, ensuring a frictionless payment experience within the ecosystem.



Financial Empowerment

The core mission of IBME is to recapture at least 1% of the \$1.4 trillion annual spending power of Black Americans and reinvest it within the community. By keeping financial resources within Black-owned businesses, IBME promotes:

- Community Reinvestment – Circulating wealth within the Black economy rather than external corporations.
- Entrepreneurial Growth – Enabling businesses to scale operations through direct peer-supported funding models.
- Reduced Reliance on Traditional Finance – Eliminating barriers such as high-interest loans, predatory lending, and discriminatory banking policies.



Ownership and Governance

IBME Token goes beyond being just a digital currency—it also serves as a governance and ownership tool within the IBCAME ME ecosystem. Token holders enjoy:

- Membership Privileges – Access to exclusive services, merchant discounts, and investment opportunities.
- Voting Rights – Influence platform developments, business partnerships, and ecosystem governance through decentralized voting mechanisms.
- Equity Exchange – IBME holders can convert their tokens into shares, providing real ownership in the ecosystem's businesses and assets.

This model ensures that the community remains actively involved in the platform's growth and decision-making, preventing centralization and external control.



Secure and Transparent Transactions

Blockchain technology ensures that all IBME transactions are:

- Tamper-Proof – The decentralized ledger prevents fraud and unauthorized alterations.
- Fully Traceable – Every transaction is publicly recorded, ensuring financial transparency.
- Scalable and Accessible – Solana's high throughput allows the platform to support millions of users without congestion or high fees.

With smart contracts automating transactions and zero third-party interference, IBME provides a trustless, decentralized financial experience.



Asset-Backed Growth

Unlike many cryptocurrencies that rely solely on market speculation, IBME is backed by real-world assets, including:

- Real Estate Holdings – Properties and land investments generate tangible value and stability.
- Technology Ventures – IBME is integrated into scalable tech platforms, ensuring sustained adoption and utility.

This ensures that IBME maintains intrinsic value, offering both stability and long-term appreciation. By anchoring the token's growth to physical and technological assets, the ecosystem provides a hedge against volatility and aligns financial incentives with sustainable economic expansion.





Vision & Mission Summary

The IBME Token (\$IBME) aims to create a self-sustaining digital economy that empowers Black Americans by leveraging blockchain technology to support Black-owned businesses and reinvest financial resources within the community.

Vision

IBME envisions a thriving financial ecosystem where Black-owned businesses and consumers prosper independently of traditional financial institutions. It promotes economic autonomy, financial inclusion, and wealth-building by ensuring money stays within the Black community.

Mission

IBME seeks to recapture 1% (\$14 billion) of Black Americans' \$1.4 trillion annual spending by providing a multi-vendor marketplace, e-commerce platform, and delivery service powered by IBME Tokens. At least 85% of vendors will be Black-owned businesses, fostering economic reinvestment and growth.

Key Goals:

- Encourage community reinvestment by cycling funds within Black businesses.
- Empower financial independence through decentralized transactions.
- Enable shared ownership by allowing IBME holders to trade tokens for shares and vote on platform decisions.
- Reduce reliance on traditional banks by offering a trustless, blockchain-based financial system.

IBME is designed to strengthen Black economic power by ensuring that commerce, ownership, and governance remain within the community, driving sustainable financial growth.





Why \$IBME?



Economic Empowerment

The IBME Token (\$IBME) is more than just a cryptocurrency; it is a financial empowerment tool designed to support economic growth, shared ownership, and long-term stability within the Black community. By leveraging blockchain technology, IBME ensures secure, cost-efficient, and community-driven transactions, fostering financial independence and wealth creation.

The IBME Token serves as a catalyst for economic sustainability by empowering Black-owned businesses and ensuring financial resources circulate within the community rather than leaving it.

Key Benefits:

- Encourages Black-owned business growth – By creating an ecosystem where businesses can thrive using IBME as a primary currency, the platform fosters financial self-sufficiency.
- Supports wealth-building opportunities – IBME holders can earn rewards, stake tokens, and invest in business initiatives, creating pathways for financial stability and generational wealth.
- Provides an alternative to traditional banking systems – Many Black Americans face financial exclusion due to banking restrictions, high fees, or systemic barriers. IBME offers decentralized financial services with lower costs and greater accessibility.



Ownership and Governance

Unlike traditional financial models, IBME empowers its community by enabling shared ownership and decision-making through a governance system that prioritizes the interests of its users.

Key Features:

- Membership Benefits – Holding IBME Tokens grants users membership within the ecosystem, unlocking exclusive rewards, discounts, and investment opportunities.
- Trade for Equity – Token holders can convert IBME into shares of platform initiatives, providing direct ownership in profitable ventures such as real estate, e-commerce, and technology infrastructure.
- Community Governance – Through decentralized governance, IBME holders can vote on key decisions, such as funding new projects, allocating platform resources, and implementing ecosystem upgrades.

This democratic approach ensures that IBME is community-driven, allowing participants to shape the platform's future while benefiting from its growth.



Cost Efficiency and Security

Traditional financial systems often impose high fees and slow transaction processing, limiting economic participation. IBME solves these issues by providing a cost-effective, secure, and transparent alternative.

Key Advantages:

- Minimal transaction fees – Unlike credit cards and banks that charge processing fees and service charges, IBME transactions occur on the Solana blockchain, where fees are significantly lower.
- Fraud Protection – Blockchain immutability ensures tamper-proof transactions, reducing risks related to identity theft, chargebacks, and financial fraud.
- Secure & Transparent Transactions – IBME's decentralized nature eliminates the need for intermediaries, providing direct, peer-to-peer transactions with full transparency and real-time tracking.

These features make IBME ideal for daily transactions, e-commerce, and international payments, offering users financial security with minimal costs.



Stability and Growth

Unlike many speculative cryptocurrencies, IBME is designed for long-term sustainability and real-world value appreciation by being backed by tangible assets.

Key Growth Factors:

- Backed by Real-World Assets – IBME is supported by investments in real estate, technology infrastructure, and e-commerce to ensure stable value and consistent growth.
- Designed for Value Appreciation – Unlike inflation-prone fiat currencies, IBME's deflationary model and strategic asset backing contribute to long-term value stability.
- Scalability & Widespread Adoption – With a multi-vendor marketplace, delivery network, and wholesale e-commerce stores, IBME is positioned for mass adoption in both retail and commercial sectors.

This unique model ensures that IBME retains value while simultaneously promoting economic empowerment and financial autonomy.



Technical Overview

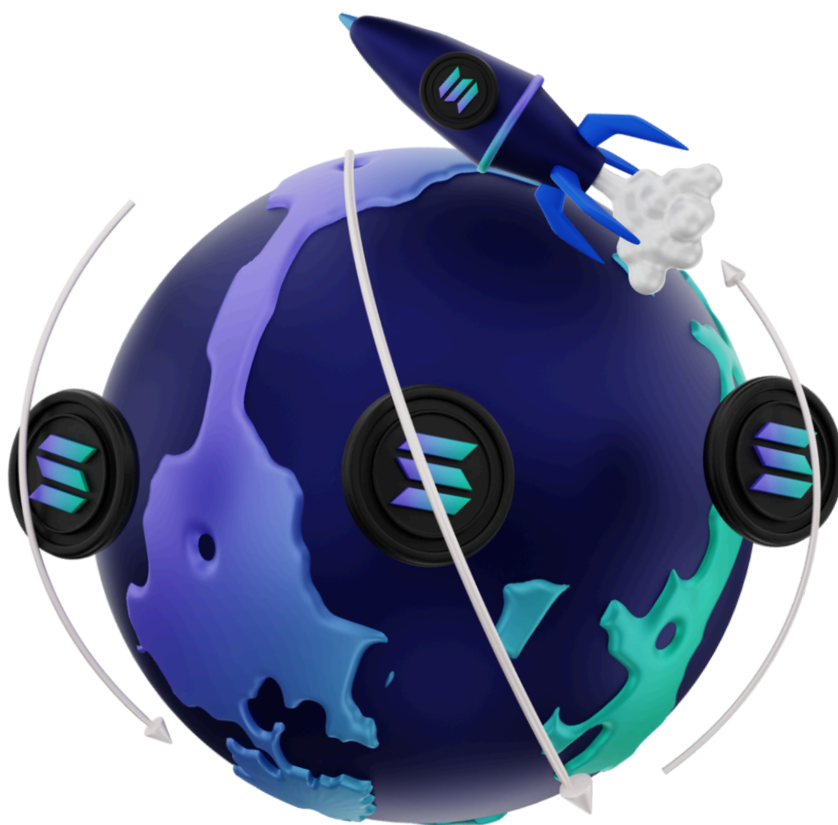
The IBME Token (\$IBME) is built on the Solana blockchain, leveraging its high-speed transactions, low costs, and robust security to create a seamless digital economy. This section details the blockchain infrastructure, smart contract capabilities, and security measures that ensure the efficiency and reliability of IBME within the IBCAME ME ecosystem.

The IBME Token (\$IBME) is built on the **Solana blockchain**, ensuring fast, secure, and low-cost transactions. It utilizes Proof-of-History (PoH) and Proof-of-Stake (PoS) for scalability, processing over 65,000 transactions per second with minimal fees.

Smart contracts power automated transactions, staking rewards, and community governance, enabling seamless payments, secure investments, and decentralized decision-making.

Security is reinforced through advanced encryption, fraud prevention, and decentralized validation, ensuring safe and transparent financial interactions. IBME also follows KYC/AML regulations and undergoes regular audits to maintain trust and compliance.

With robust infrastructure, automation, and strong security measures, IBME is positioned as a scalable and reliable financial tool for Black economic empowerment.

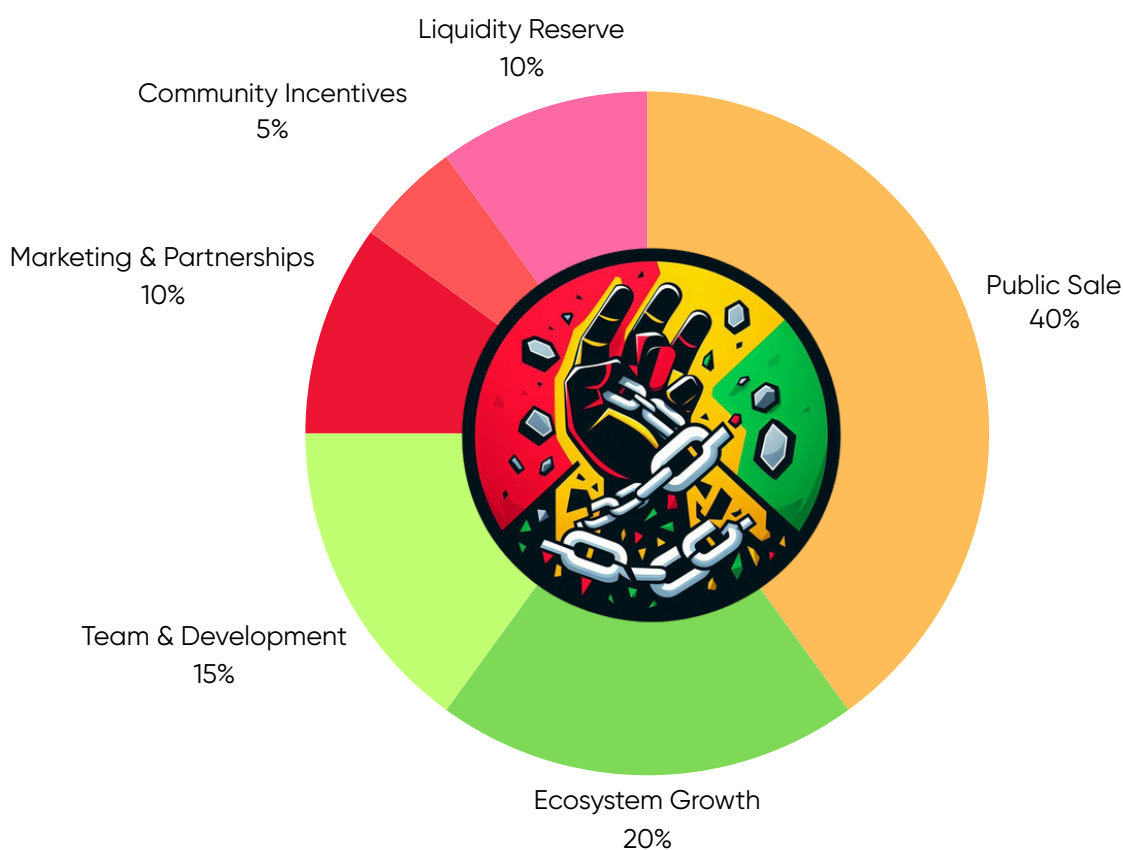




Tokenomics

The IBME Tokenomics model is designed to foster long-term growth and stability while rewarding holders and incentivizing participation in the ecosystem.

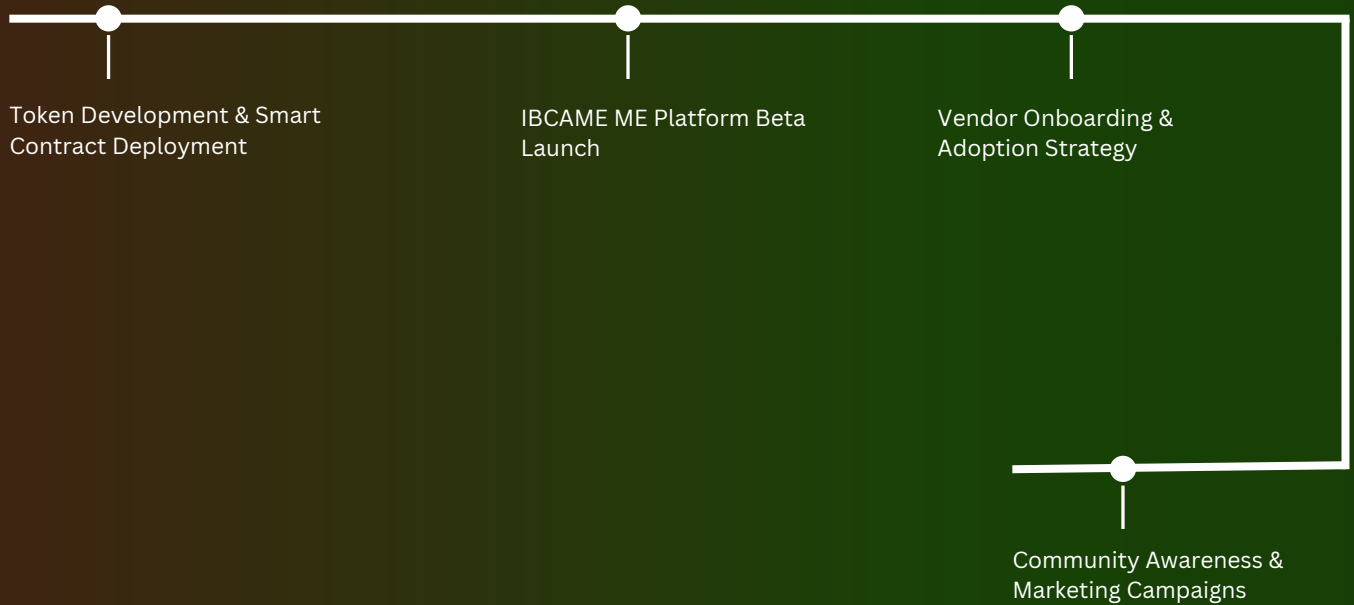
Category	Allocation (%)	Tokens Allocated
Public Sale	40%	400,000,000
Ecosystem Growth	20%	200,000,000
Team & Development	15%	150,000,000
Marketing & Partnerships	10%	100,000,000
Liquidity Reserve	10%	100,000,000
Community Incentives	5%	50,000,000





Roadmap

Phase 1



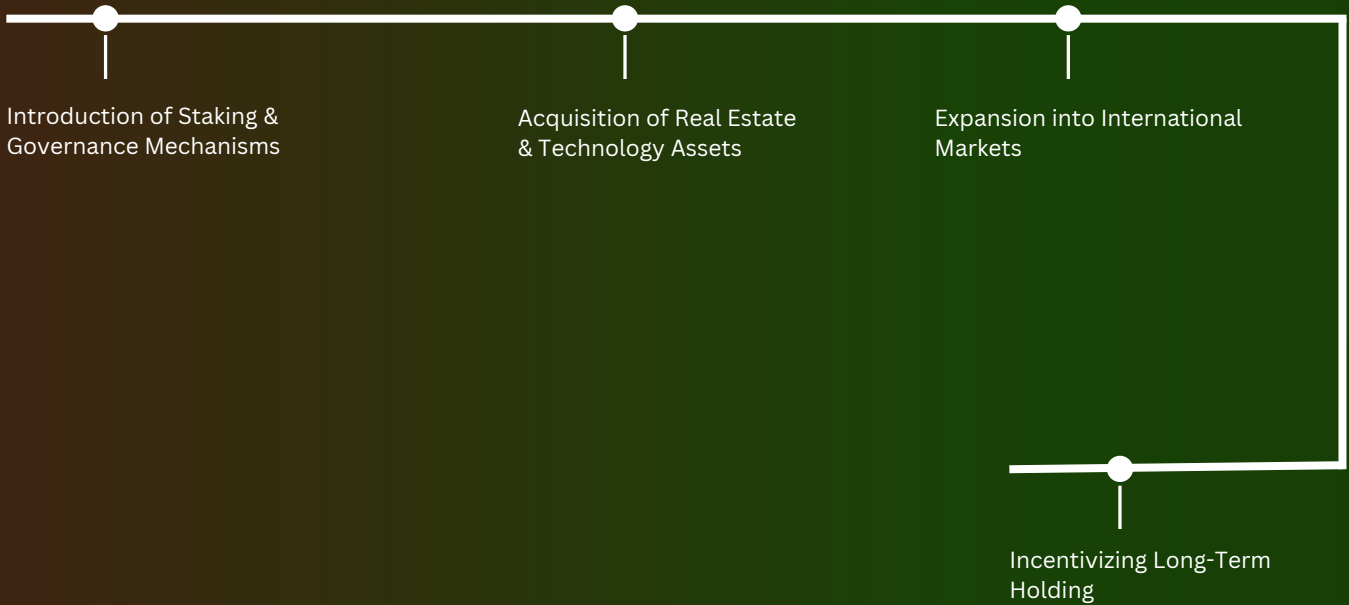
Phase 2



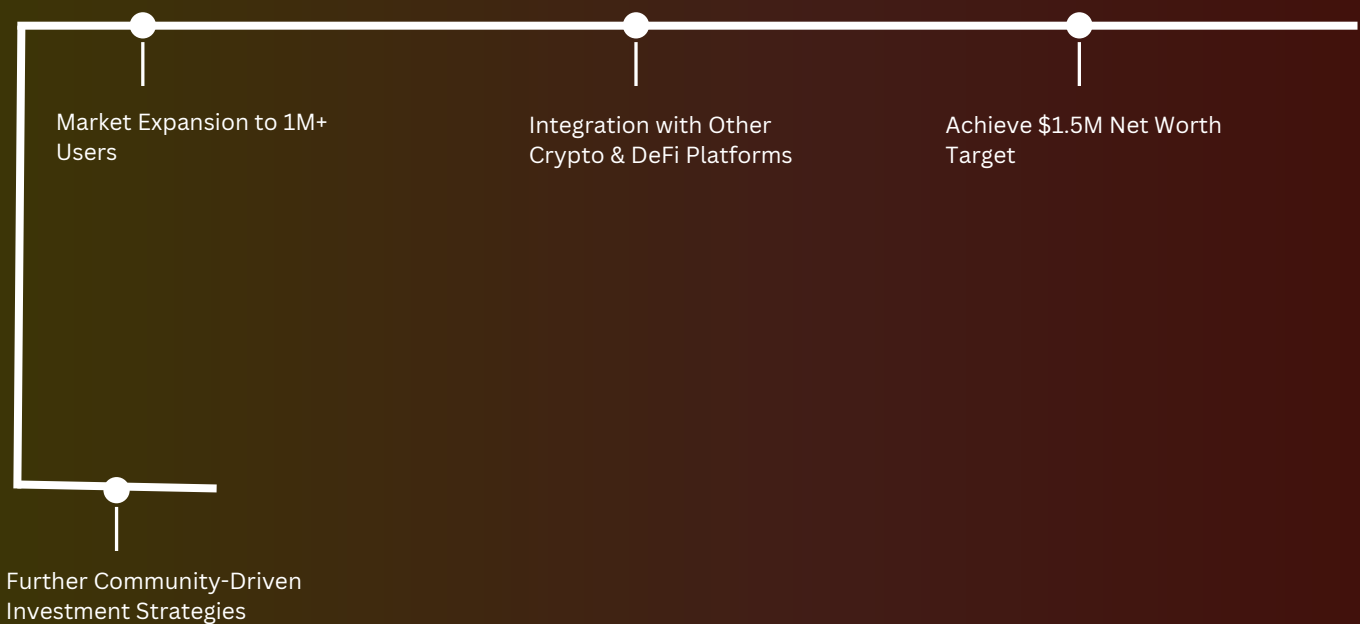


Roadmap

Phase 3



Phase 4



Conclusion

The IBME Token (\$IBME) is more than just a cryptocurrency; it is a catalyst for economic empowerment and financial transformation. By integrating blockchain technology into the IBCAME ME Platform, IBME establishes a self-sustaining ecosystem that prioritizes Black-owned businesses, community reinvestment, and financial independence.

Through seamless transactions, reduced costs, and decentralized governance, IBME offers individuals and businesses a secure and efficient alternative to traditional banking systems. By recirculating wealth within the Black community, the token empowers entrepreneurs, strengthens local businesses, and fosters long-term economic stability.

The IBME ecosystem enables shared ownership and governance, allowing token holders to participate in decision-making, trade IBME for equity stakes, and shape the platform's growth. Additionally, with its asset-backed model, IBME ensures long-term value, mitigating volatility while supporting real-world projects such as real estate and technology ventures.

As blockchain adoption grows, IBME stands at the forefront of financial inclusion, providing a transparent, secure, and scalable digital economy. By leveraging Solana's high-performance blockchain, IBME ensures fast, cost-effective transactions, making it accessible to businesses and individuals worldwide.

Ultimately, IBME is a movement toward economic independence, reshaping how wealth is distributed and ensuring that Black Americans—and like-minded individuals—can take control of their financial future. By participating in this ecosystem, users contribute to a stronger, more resilient economy that thrives on innovation, inclusivity, and shared prosperity.

